

AMALFI

PATTERN PORCELAIN TILES

20 COLOURS | 2 FINISHES | 1 FORMATS



BLUEPRINT
CERAMICS

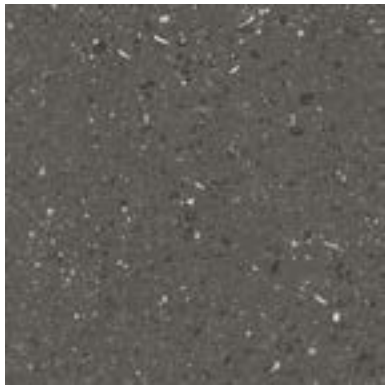
AMALFI

PATTERN PORCELAIN TILES

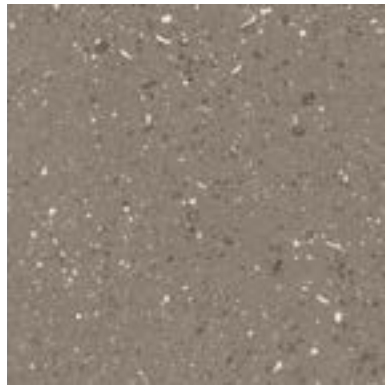
20 COLOURS | 2 FINISHES | 1 FORMATS



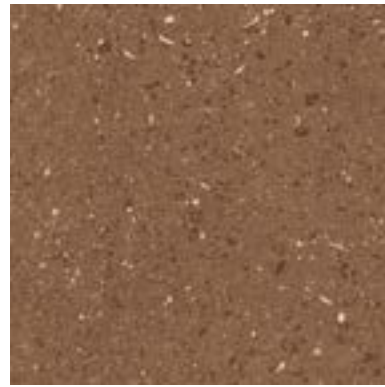
BPAM01



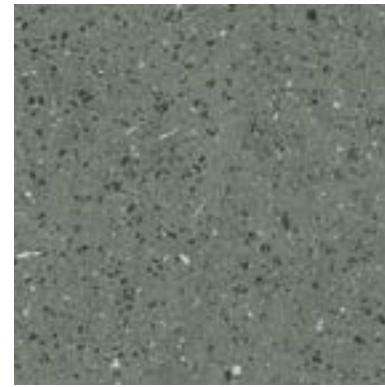
BPAM02



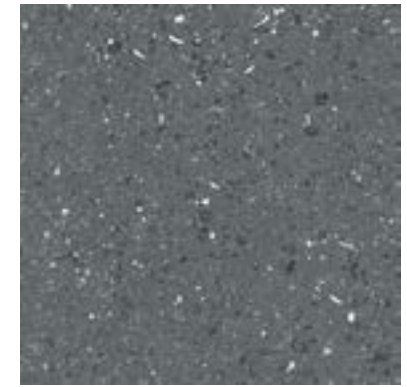
BPAM03



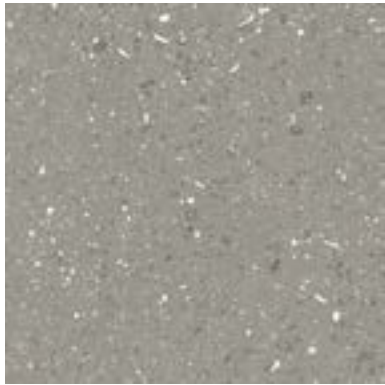
BPAM04



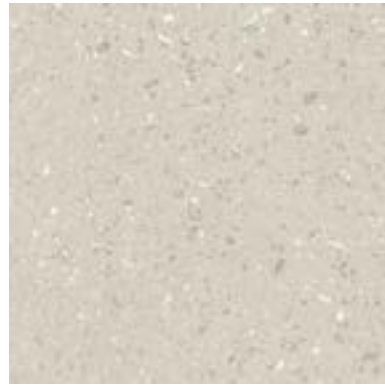
BPAM05



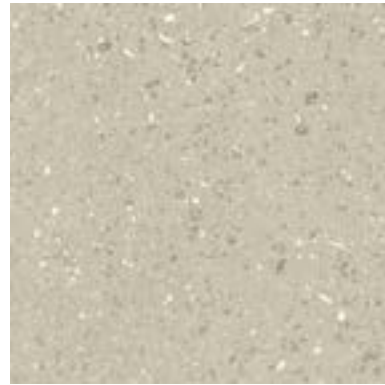
BPAM06



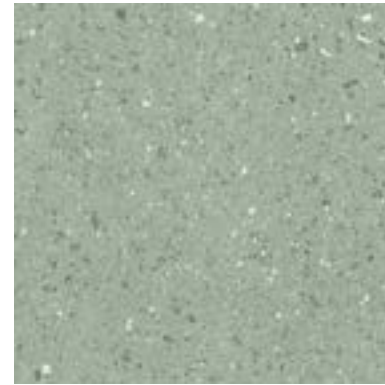
BPAM07



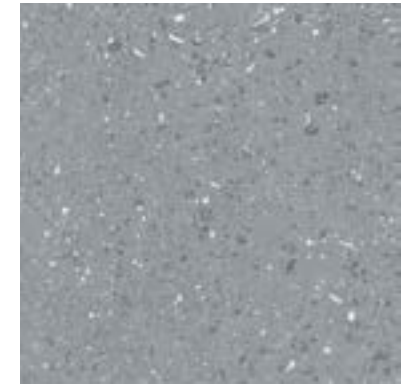
BPAM08



BPAM09



BPAM10



200x200mm
Matt
8mm Thickness

BPAM11



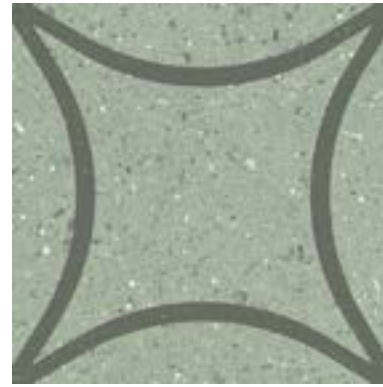
BPAM12



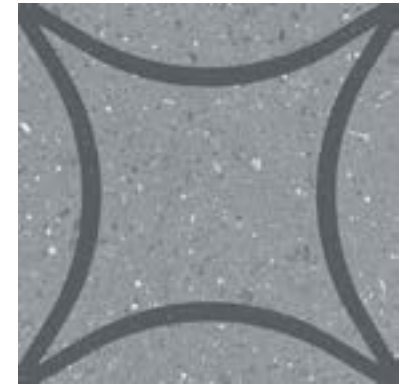
BPAM13



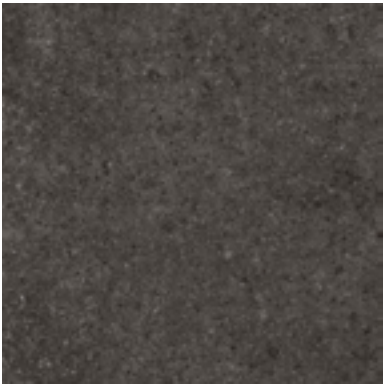
BPAM14



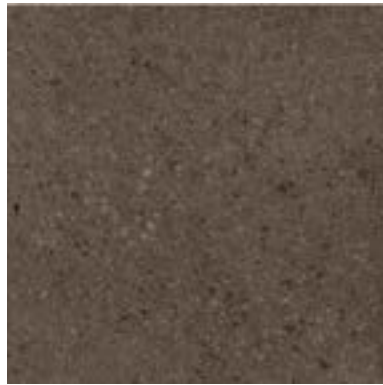
BPAM15



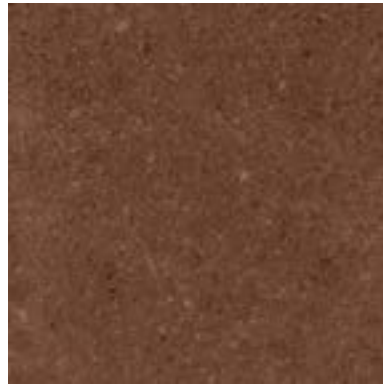
BPAM16



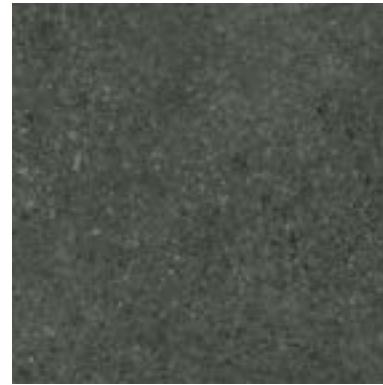
BPAM17



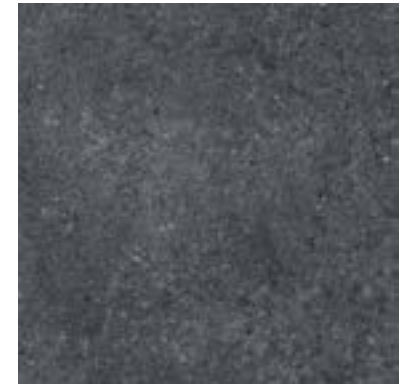
BPAM18



BPAM19



BPAM20



200x200mm
Matt 11-15
Polished 16-20
8mm Thickness

TECHNICAL DATA

FINISHES

MATT R10/POLISHED

THICKNESS

8mm

TEST DESCRIPTION	TEST REQUIREMENT	VALUE
Length & Width	BS EN ISO 10545-2	Conforms
Thickness	BS EN ISO 10545-2	Conforms
Straightness of Sides	BS EN ISO 10545-2	Conforms
Rectangularity	BS EN ISO 10545-2	Conforms
Flatness	BS EN ISO 10545-2	Conforms
Water Absorbtion	BS EN ISO 10545-3	$E_v \leq 0,5\%$
Flexion Resistance	BS EN ISO 10545-4	N/A
Breaking Strength	BS EN ISO 10545/5	$S \geq 1800 \text{ N}$
Abrasion Resistance	BS EN ISO 10545-6	N/A
Reaction to Fire	BS EN ISO 10545-12	N/A
Chemical Resistance	BS EN ISO 10545-13	A/LA/HA
Resistance to Stains	BS EN ISO 10545-14	Class 5

**BLUEPRINT
CERAMICS**